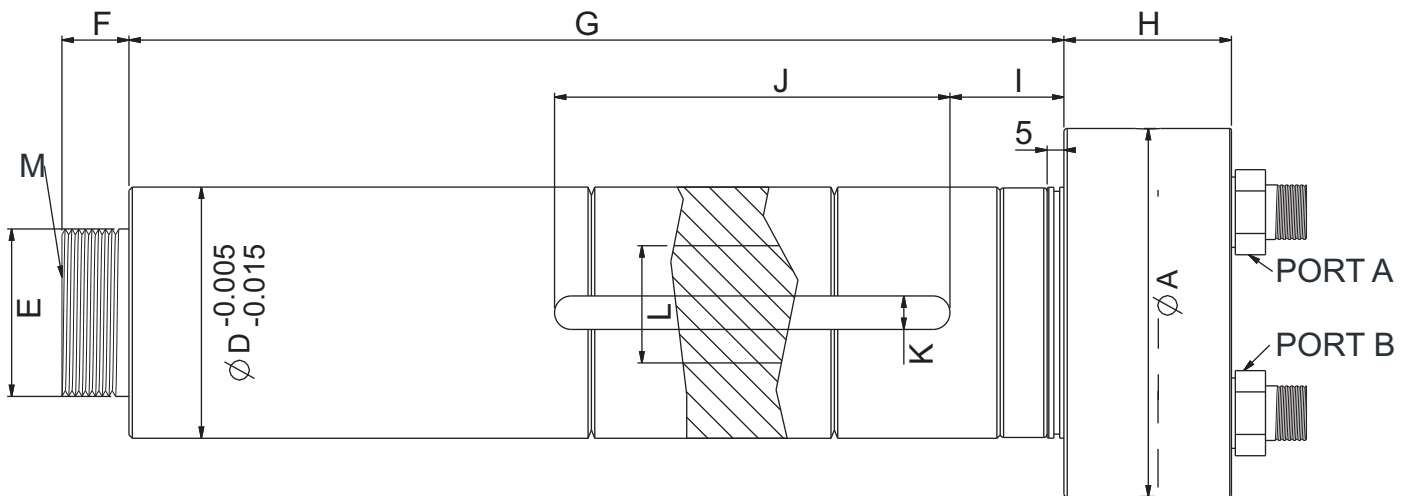
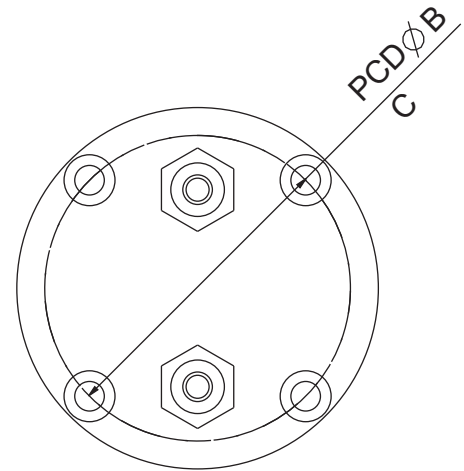


# TAIL STROCK CYLINDER



## DIMENSIONS

\*All dimension are in mm

MODEL	ØA	ØB	C	ØD	E	F	G	H	I	J	K	L	M	N (Stroke)	Port
VTC-60-40-85	95	76	4-M8	60	M50 x 2	20	273	35	48	98	8	40	MT-4	85	1/4" BSP
VTC-75-50-100	110	93	4-M8	75	M50 x 2	20	279	50	34	118	10	50	MT-4	100	1/4" BSP
VTC-75-50-160	110	93	4-M8	75	M50 x 2	20	387	50	42	170	8	50	MT-4	160	1/4" BSP
VTC-85-50-120	117	100	4-M8	85	M50 / M65	20	349	50	44	160	10	50	MT-4/ MT-5	120	3/8" BSP
VTC-100-70-150	138	115	4-M10	100	M65 x 2	20	403	50	48	170	10	70	MT-5	150	3/8" BSP
VTC-130-70-120	170	150	6-M10	130	M65 x 2	20	370	60	44	160	10	70	MT-5	120	3/8" BSP

we can supply as customer requirement also.

NOTE : Specification Subject to Change without Prior Notice.